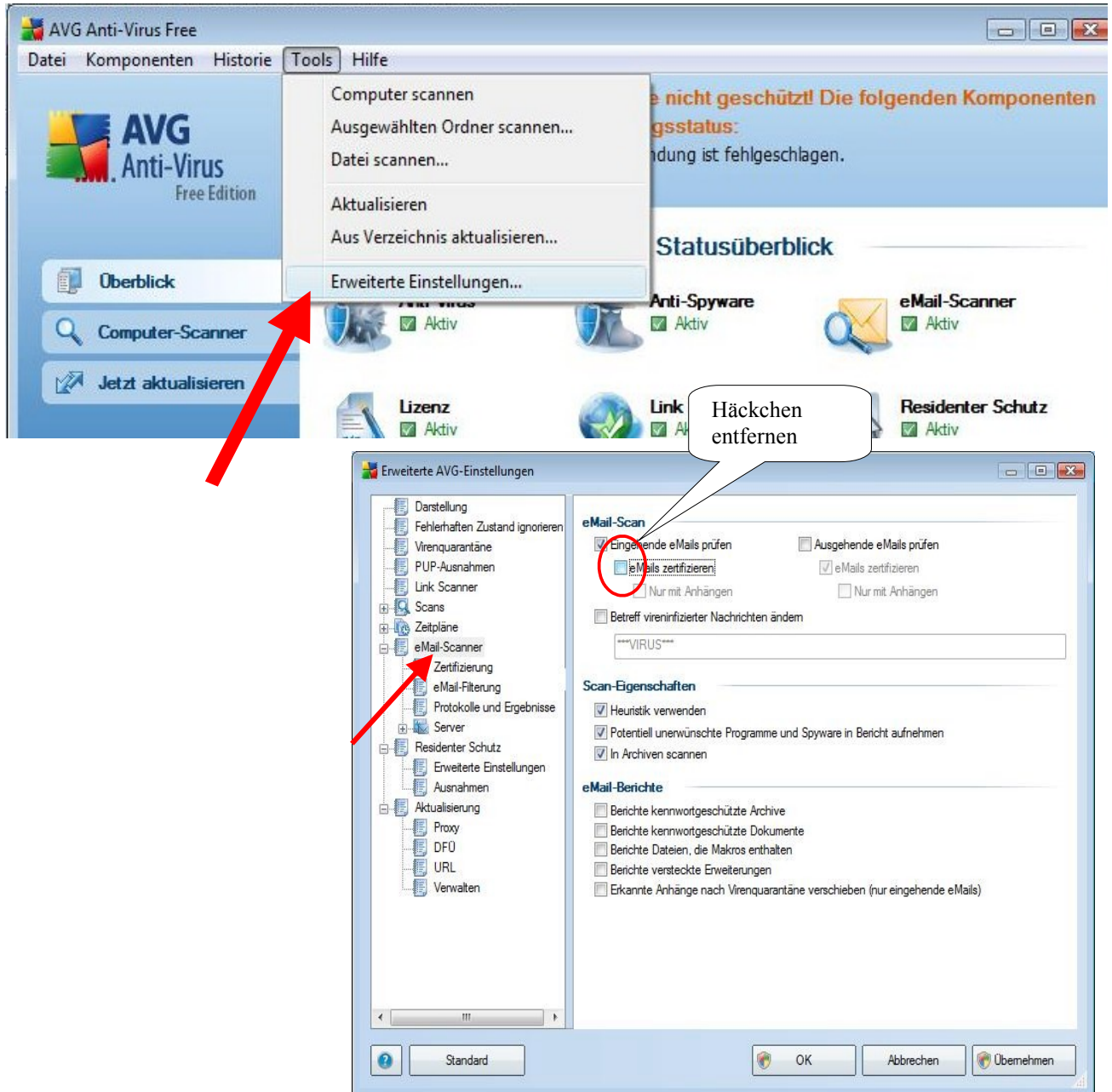


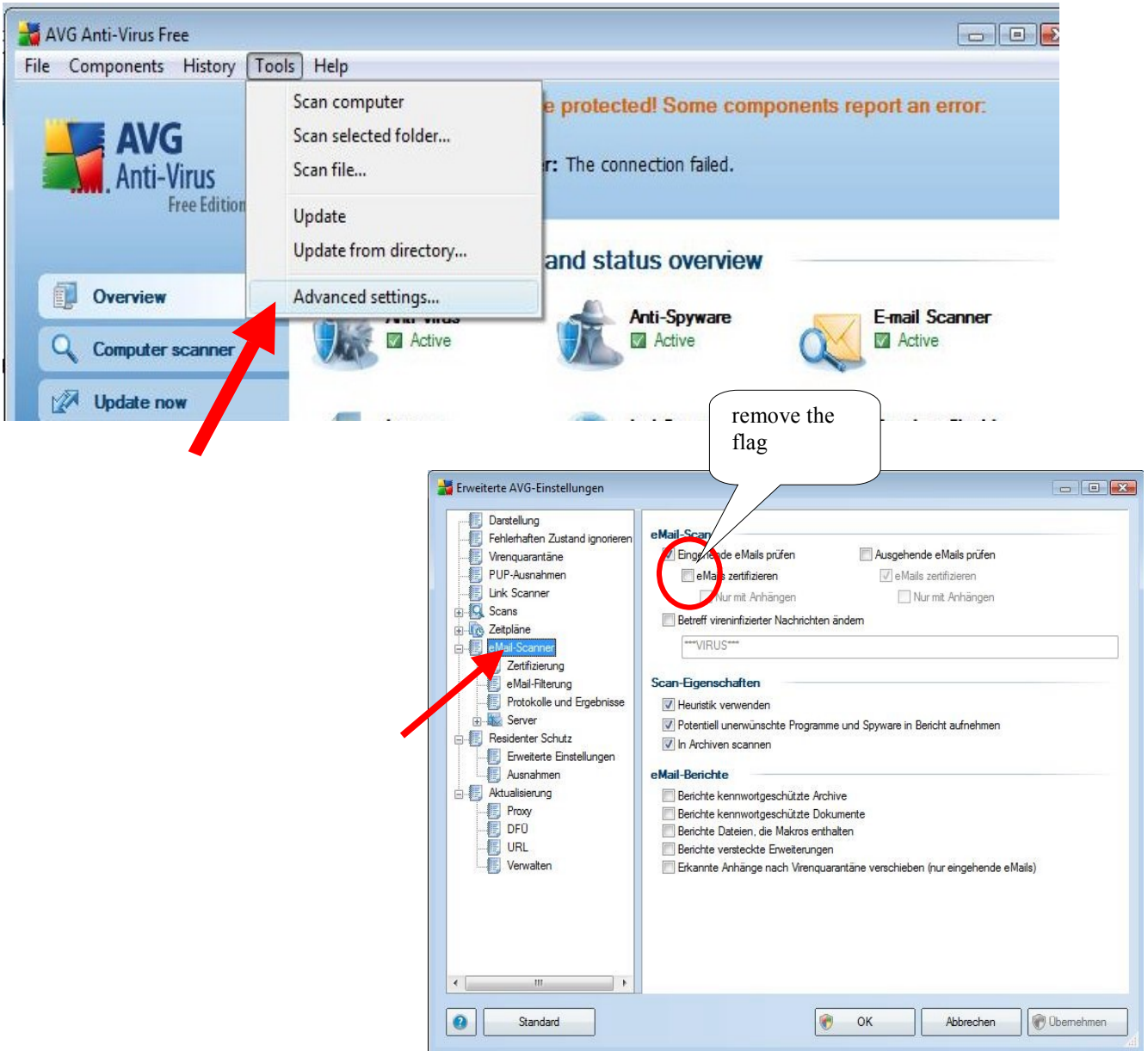
## AVG Einstellungen:

bei Benutzung der Stockwaagenverwaltung, damit die E-Mails der SMS Waage korrekt eingelesen werden können:



## AVG Settings:

necessary for using with the „Beehive Administration Tool“. The setting ensures a correct data transmission from your email account.



## AVG Paramètres :

necessary for using with the „Beehive Administration Tool“. The setting ensures a correct data transmission from your email account.

